

Installing Lunar on Windows XP

Follow this guide to install Lunar on Microsoft Windows XP.

Note that it is **not** enough to run the setup program, you must do the manual installation also otherwise Lunar will not be properly installed.

0. Run the LunarSetup.exe file to extract the Lunar files to the directory of your choice.



Figure 1: Press Next to start the installation

1. Open the “Wireless Network Connection Properties” dialog for the wireless network card that will be used by LUNAR.



Figure 2: Wireless Network Connection Properties dialog

2. In this dialog, select “Install...” and then “Service” /”Add...””.

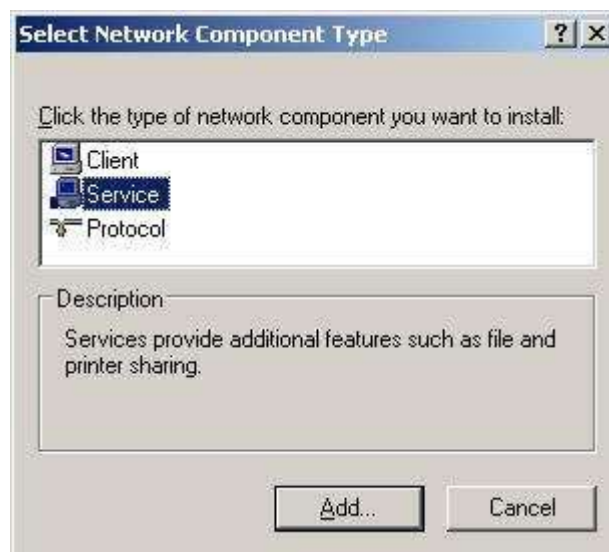


Figure 3: Choose to add Network Service

3. In the “Select Network Service” dialog that comes next, select “Have Disk...”, browse to the folder you installed Lunar to and select the "netsf.inf" file. Select "Lunar Driver" and press "OK".



Figure 4: Select “Have Disk...”

4. Then a number of warning dialogs will (or at least may) appear because this driver is not signed by Microsoft. Click "Continue Anyway" in all these dialogs (note that there may be quite a lot of them) and the driver will be installed.



Figure 5: Warning dialog that appears because the driver is not Microsoft certified

5. The “Lunar Driver” the appears in the “Wireless Network Connection Properties” dialog. To choose between manually selecting the IP address or using DHCP click on "TCP/IP" and select "Properties" as normal.

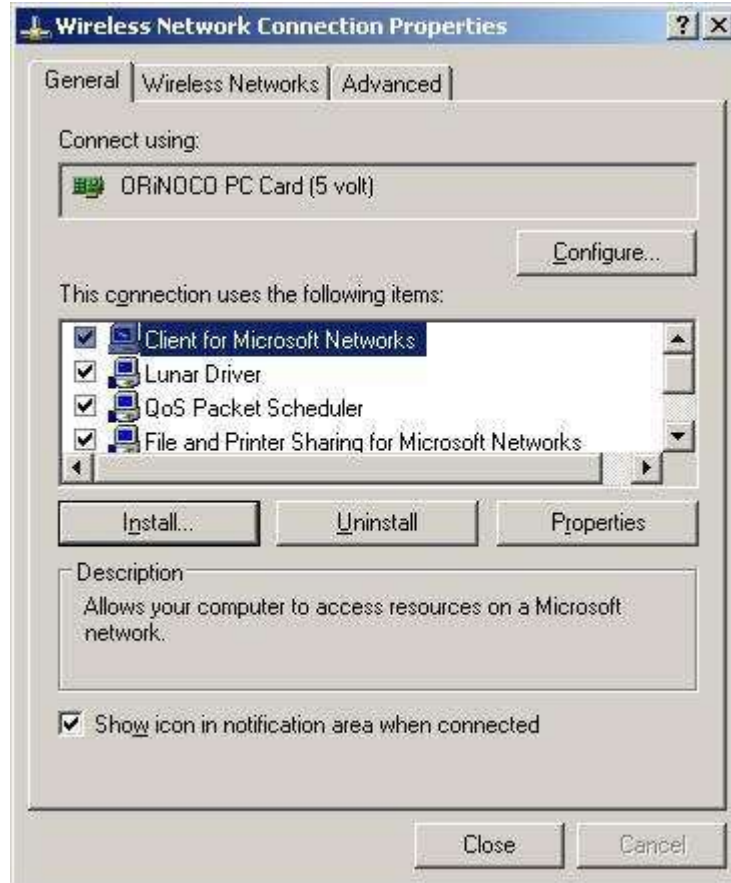


Figure 6: The Lunar Driver has been installed

Uninstall Lunar on Windows XP

Follow this guide to uninstall Lunar on Microsoft Windows XP

Note that it is **not** enough to run the uninstall.ex file, you must manually uninstall the Lunar driver first, otherwise Lunar will not be properly uninstalled.

1. Select "Lunar Driver" in the "Wireless Network Connection Properties" dialog and choose "Uninstall".

Unfortunately, since the finalization stuff is still in its beta stage, this may currently bug (or may even cause a system crash).

Therefore, try to mark the "Lunar Driver" as not used by the connection (by deselecting its check box and pressing "OK") in the "Wireless Network Connection Properties" dialog before uninstalling it.

If the connection dialog and/or Windows should hang (or crash) you can try performing the following steps:

- If Windows has crashed, reboot to "Safe mode with command prompt".
- On Windows XP, rename the file "C:\WINDOWS\system32\drivers\lunar.sys" to e.g. "lunar_old.sys". (This way it can be restored if that is needed.) On Windows 2000, the file is instead located at "C:\WINNT\system32\drivers\".
- Reboot your system.
- Try to uninstall the driver again (if it is still present in the "Wireless Network Connection Properties" dialog).

2. Run uninstall.exe from the Lunar directory to delete the Lunar files.